

THE REFERENCE IN STEEL BUILDINGS



ASTRON: THE BUILDING WHICH RESPONDS TO YOUR NEEDS



China - Brewery

advanced robotics and CNC machinery. In September 1995, ASTRON added a further manufacturing facility in the Czech Republic. ASTRON's capacity is up to 100 buildings per week. In order to meet one of the prime demands of our customers, delivery deadlines are respected thanks to well proven production logistics.



Germany - Offices

You are looking for a building which is tailor-made to the requirements of your company? Which offers the best price/quality ratio? Which enables fixed deadlines and early occupancy? An ASTRON building will entirely meet these criteria.

THE REFERENCE IN STEEL BUILDINGS

With ASTRON, you are working with the European leader in steel buildings, with more than 40 years of experience in supplying more than 35 million m² of buildings for 31.000 satisfied customers throughout Europe and other locations, for all applications (manufacturing plants, factories, warehouses, showrooms, workshops, retail outlets, supermarkets, indoor tennis, sports centres, aircraft hangars, offices, multi-purpose buildings). Located in Luxembourg, right at the heart of Europe, ASTRON's 28,000 m² manufacturing plant, one of the most modern in its field, utilises



France - Offices

THE ASTRON BUILDER:

SINGLE SOURCE SUPPLY

ASTRON companies are located in Luxembourg, Germany, France, Czech Republic and Poland. Representative sales offices are in Italy, Hungary, Romania, Spain, Croatia and Russia, together with a network of 300 local Builders.

Accordingly, you profit from an international resource in alliance with the ability of a local expert who offers a single source solution to all your building requirements, from the initial design and planning stage, right through to completion and maintenance.



Germany - Recycling



Luxembourg - Storage

ASTRON: A FLEXIBLE AND COMP

The ASTRON building system includes all primary and secondary framing elements, six roof panel systems, six wall panel systems, blanket insulation and all flashings, bolts, fasteners and sealants. Integrated accessories, crane beams and rails, and mezzanines are also available.

ASTRON buildings are custom-designed to client's requirements and can have clear spans, without intermediate columns, from 10 to 100 m.

Below are the different types of configuration available in the ASTRON range. Buildings can be complemented by the addition of parapets, canopies, roof extensions or other architectural features.



BUILDING TYPES	
AZM1 Clear span, pitched roof buildings with tapered columns.	
AZM2/3/4 Pitched roof buildings with tapered portal frame columns and internal prop columns.	
AP Wing unit structure to be attached to a main building. Special slim parallel flange columns allow for flush inside walls.	
AL Clear span, single slope buildings with parallel flange columns.	
AE Clear span, pitched roof buildings with parallel flange columns.	
AS Clear span, pitched roof buildings for large and very large spans. Tapered columns.	
AT Tennis buildings conforming to national regulations with parallel flange columns, available with a standard pitched roof or a polygon roof.	

PRIMARY FRAMING

- Intermediate frames, clear span or with prop columns, including anchor bolts.
- Wind bracing, wind bents, wind columns.
- Crane brackets and other framing parts.
- ASTRON-buildings can be designed for most types of cranes and a complete range of mezzanines, for both clear span and modular configurations.

SECONDARY FRAMING

- Galvanised, roll-formed Z, C or U profiles.
- Purlins, designed as continuous beams with rigid connections.
- Wall girts, also generally designed as continuous beams, but can also be simply supported between columns.
- Galvanised fixing bolts.

ROOF PANEL SYSTEMS

PR ROOF

Profiled, steel panel, with protective, weather coating of superpolyester or ALUZINC. Complete with stainless steel fixing screws and tape sealant to side and end laps.

ASTROTEC ROOF

Standing seam profiled steel panel, with ALUZINC protective weather coating. No through fixings in the water drainage area.

DOUBLE SKIN ROOF (D.S.R.)

Consisting of an inner skin of PR profile panels fixed directly to ASTRON purlins. A secondary structure of omega spacers and auxiliary purlins are then fixed on top of the inner skin panels. Outer skin ASTRON PR panels or ASTROTEC panels, together with ASTRON insulation between the skins, complete the system.

POLAR ROOF

Composite, sandwich panel, consisting of galvanised, colour-coated steel inner and outer skins, encompassing an expanded Polyurethane (CFC free) core. Provides high insulation values. Several thicknesses of panel are available.

LETE SYSTEM

LOW PITCHED ROOF SYSTEM

MULTITEC

Consisting of ribbed steel panels, fixed to the purlins. The roof includes all necessary parts (and parapet structures) to receive a built-up roof system.

SPACETEC

Purlinfree roof consisting of deeply corrugated steel panels fixed directly to the primary framing. It allows the application of various built-up roofs.

WALL CLADDING SYSTEMS

PA WALL

Profiled steel panel, with protective weather coating of superpolyester or PVDF. Complete with colour matching fixing screws.

EUROTEC WALL

Profiled steel panel, with protective PVDF weather coating, having an embossed appearance. No exterior fixings, concealed fasteners are utilised to the inside of the building, offering a high degree of security.

POLAR WALL

Same system as Polar roof.

SINUTEC WALL

Sinusoidal steel panel with protective weather coating.

SINUTHERM WALL

Composite panel, consisting of colour coated steel inner and outer skin, protected by a GALFAN coat and encompassing an expanded, CFC-free Polyurethane core. Provides high insulation values.

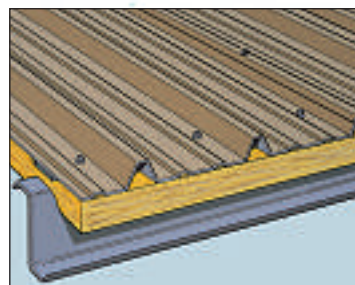
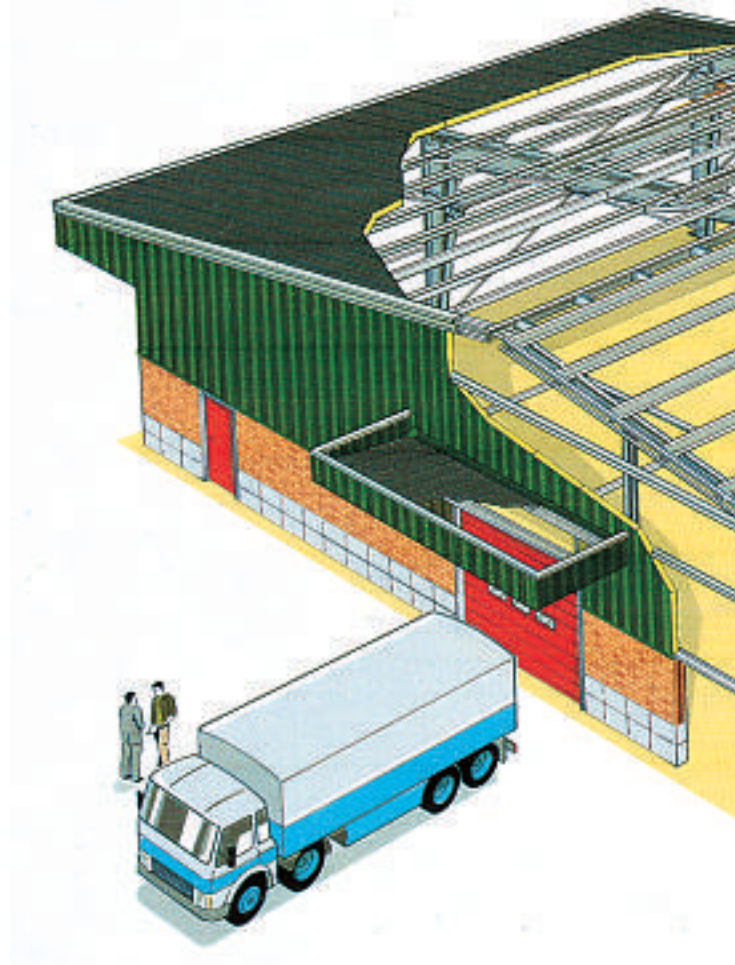
CASSETTE WALL SYSTEM

The horizontal liner cassette wall is fixed directly to the columns of the building. The outside cladding can be erected vertically or horizontally.

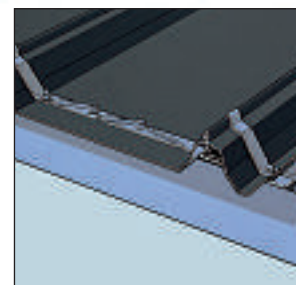
ASTRON INSULATION

Adaptable to PA, EUROTEC and SINUTEC walls and to PR, ASTROTEC and DSR roofs. It consists of a flexible fibreglass blanket laminated to an integral vapour barrier facing. The facing provides an attractive finish to the interior of the building.

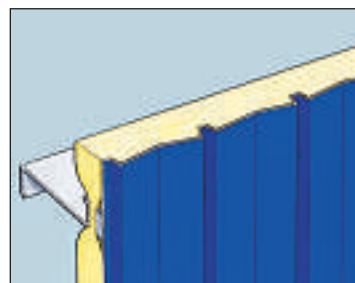
SPAN WITHOUT INTERMEDIATE
ROOF SLOPE : FROM 2 TO 33 %
EAVE HEIGHT : FROM 3 TO 12 M
BAY SPACING : FROM 5 TO 12 M



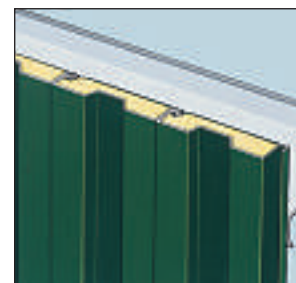
PR ROOF



ASTROTEC ROOF

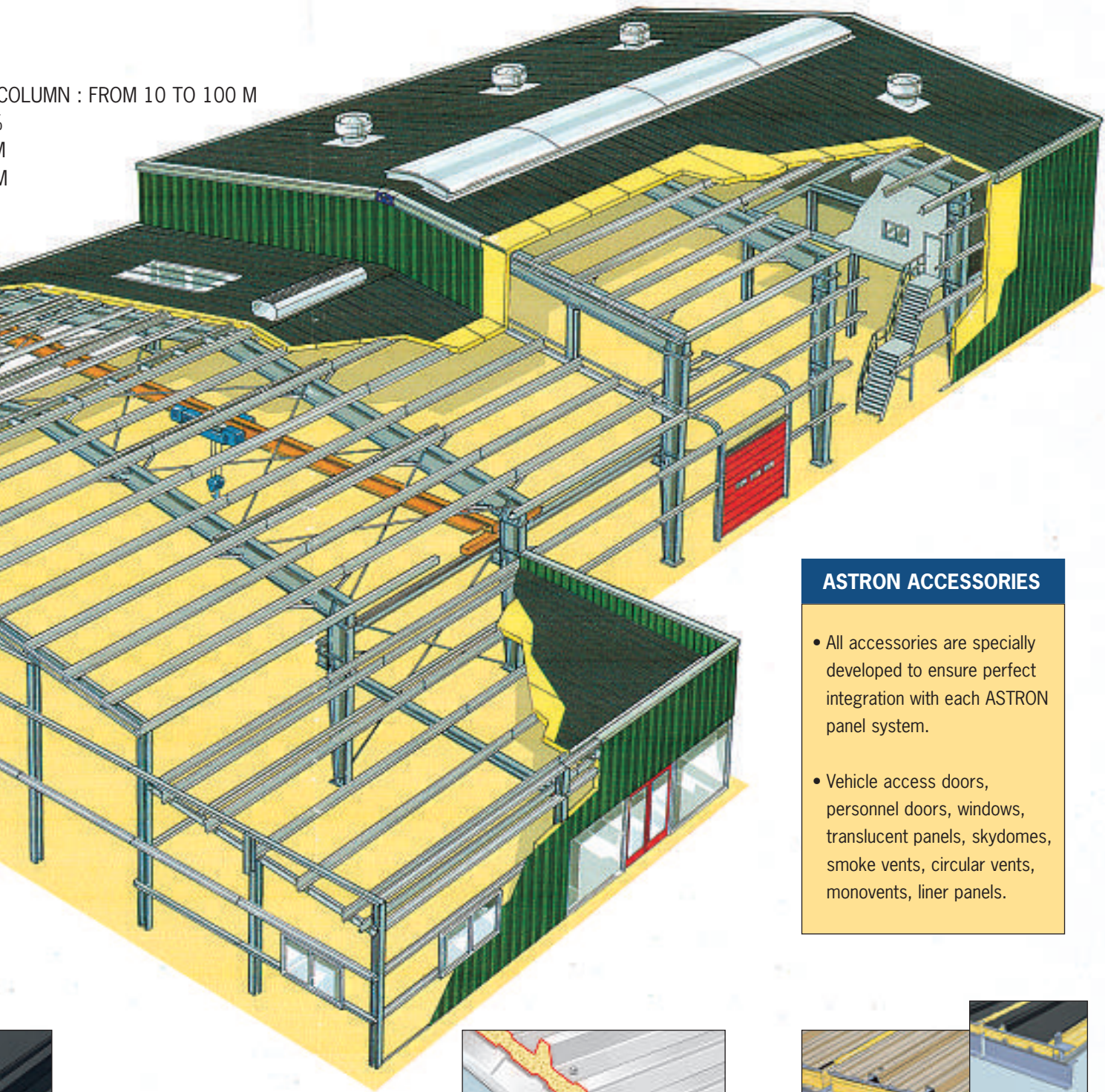


PA WALL



EUROTEC WALL

COLUMN : FROM 10 TO 100 M

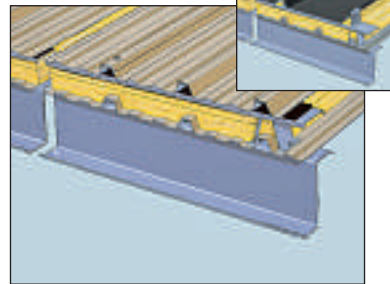


ASTRON ACCESSORIES

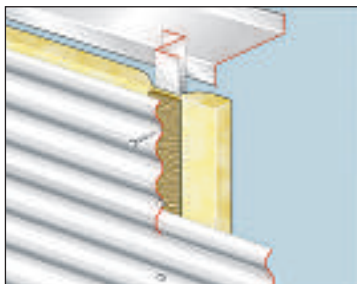
- All accessories are specially developed to ensure perfect integration with each ASTRON panel system.
- Vehicle access doors, personnel doors, windows, translucent panels, skydomes, smoke vents, circular vents, monovents, liner panels.



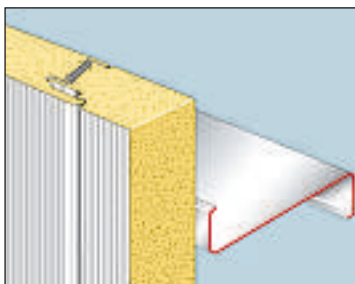
POLAR ROOF



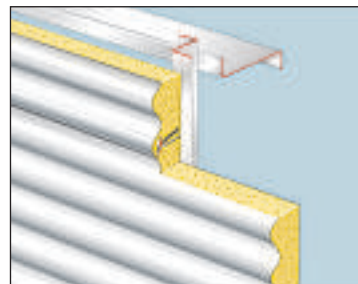
DOUBLE SKIN ROOF (DSR)



SINUTEC WALL



POLAR WALL



SINUTHERM WALL



Luxembourg - Showroom and garage



Spain - Shipyard building



Luxembourg - Laboratory and storage



Sweden - Sports centre



Switzerland - Production



Italy - Equestrian centre



Hungary - Production and storage



Great-Britain - Garage



Romania - Production and storage



Germany - Trade

Czech Republic - Storage



Germany - Production and storage





Belgium - Factory



Portugal - Supermarket

TURNKEY SOLUTION

The ASTRON Builder will take care of all your "day to day" worries, from preliminary design, site preparation and foundations, to the building being fully operational. If necessary, he can assist with land acquisition, finance and legal consultation. His professionalism guarantees you a tailor-made building, respecting your budgets and deadlines.



France - Factory

PERFORMING SYSTEM

An ASTRON building provides almost endless alternatives in span, eave height, roof slope and bay spacing configurations, to suit your space requirements. ASTRON buildings are flexible, allowing the easy architectural integration of traditional building materials, such as brickwork, glazing, timber or light-weight concrete. Different roof and wall panel systems, in various combinations, allow you to create the building you want. Whatever the function of your ASTRON building, it will be tailor-made for your needs.



The Netherlands - Aircraft hangar



Poland - Factory



Luxembourg - Trade

Belgium - Storage





2006

printed december 2005

ASTRON BUILDINGS S.A.

Route d'Ettelbruck
P.O. Box 152
L-9202 Diekirch, Luxembourg
Tel.: +352 80291-1
Fax: +352 803466
info@astron.biz
www.astron.biz

ASTRON Buildings

c/o Lindab Building Systems
Evans Business Centre
Mitchelston Industrial Estate
Mitchelston Drive
Kirkcaldy, Fife
Scotland, KY1 3UF
Tel.: +44 (0)1592 652300
Fax: +44 (0)1592 653135
info.uk@astron.biz
www.astron.biz

ASTRON®, ASTRONET®, REFATEX® and CYPRION® are registered trademarks of ASTRON BUILDINGS.
© Copyright 1991 - 2005, ASTRON BUILDINGS.

This brochure is not a contractual document. The technical information contained herein is to be considered indicative only and may be subject to change. In case of contradiction, the current ASTRON specifications will take precedence.



A member of the Lindab Group



ASTRON plant in Diekirch (Luxembourg): 28 000 m²

Your local ASTRON Builder:

